

APPLICATION:

Oval sight glass fittings are used for observation and illumination of the inside of closed vessels (boilers, tanks, silos, etc.).

Sight glass fittings type 336 are oval longitudinal sight glass fittings for welding in or on, each completed with a sight glass plate inserted between the gaskets and screwed firmly.

INSTALLATION NOTE:

After welding in the base frame, check whether the sealing surface has warped. If necessary, it must be reworked! Also observe the specified torques for the screw connection, according to the operating and maintenance instructions!

The operating pressure does not apply to the base flange, this must be verified together with the pressure vessel according to AD 2000 instruction leaflet B9 or equivalent code!

**Lightweight version
with 30 mm
vision panel**



Lloyd's
Register

Operating conditions:

Temperature: (depending on glass and gasket)	up to 280°C with Borosilicate glass transparent similar to DIN 7081	
Pressure:	-0,9 ¹ up to 6	bar(g)

¹ Depending on environmental variables

IMPORTANT:

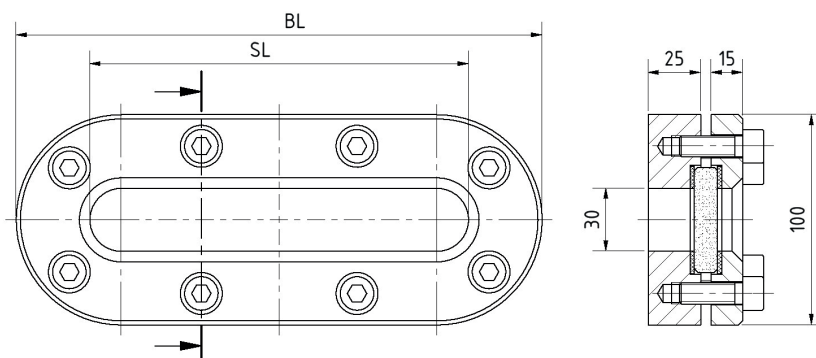
The design appraisal by Lloyd's Register does not replace the final acceptance of the entire plant!

A new final acceptance of the plant or vessel is required after welding of the base frame.

Materials:

Frame:	1.4571, 1.4404
Glass:	Borosilicate glass transparent similar to DIN 7081
Gasket: ²	PTFE; FKM; NBR; C4400; Silicone; EPDM; Graphite
Screws:	A4-70

Special materials on request
² see INFO gaskets-leaflet



BL [mm]	250	310	370	430	490	550	610	670
SL [mm]	180	240	300	360	420	480	540	600
Weight [kg]	5,6	6,9	8,2	9,6	10,9	12,2	13,6	14,9

PRODUCTCODE:

Group	TYPE	overall length	Base frame*	Glass	Gasket	Variant
11	336	250 310 370 430 490 550 610 670	2: 1.4571 3: 1.4404 8: Special	1: Borosilicate glass transparent similar to DIN 7081 6: Special	1: PTFE 2: FKM 3: NBR 4: C4400 5: Silicone 6: EPDM 7: Graphite 8: Special	Assigned by ACI if required

INFO: Unless otherwise stated, the factory standard highlighted is supplied.

*Cover frame according to quotation / order confirmation.

SPECIAL DESIGNS / OPTIONS:

- a) High temperature version on request ³
- b) Nearly cavity-free design on request
- c) Other options on request

³ without Lloyd's Register design appraisal

EXAMPLE:

11-336-370-2-1-4-000 equivalent to:

ACI Type 336

370 mm overall length

Base frame made of 1.4571

Cover frame made of 1.4571

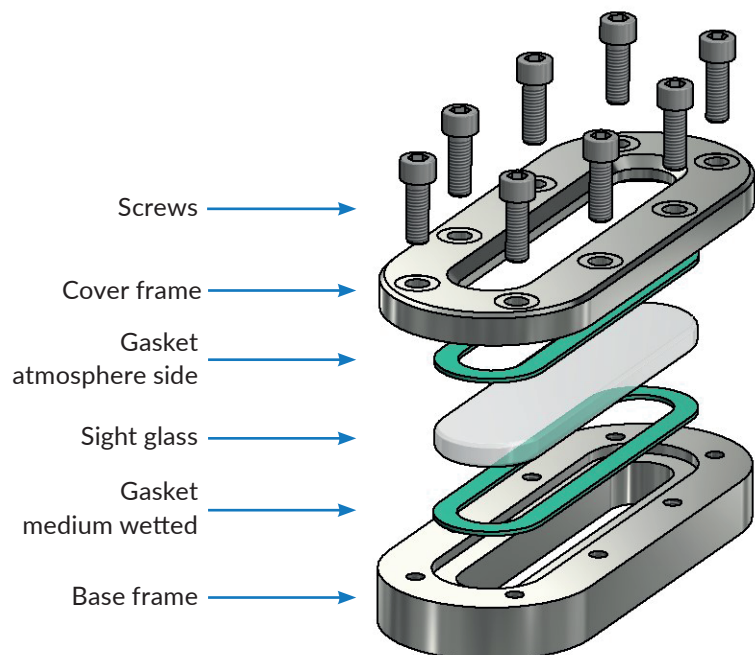
Borosilicate glass transparent, similar to DIN 7081

Gasket C4400

Standard design



Special design option b) with stepped glass



RECOMMENDATION:

For aggressive media or steam, mica discs should be used to protect the glass.

ACI Industriearmaturen GmbH · Königskamp 19 · 52428 Jülich

info@aci24.com

+49 (0) 2461 91634 00

+49 (0) 2461 91634 44

www.aci24.com

20220309

Technical changes and errors reserved!