



APPLICATION:

Observation of liquid level inside closed vessels (boilers, tanks, silos, etc.).

Sight glass fittings type 337 are oval longitudinal sight glass fittings for welding in or on, each completed with a sight glass plate inserted between the gaskets and screwed tight.

Operating conditions:

Temperature: (depending on glass and gasket)	up to 243°C with Borosilicate glass Reflex and Transparent (saturated steam or hot water pressure)	
	up to 280°C with Borosilicate glass Reflex and Transparent (without technically significant glass attack)	
	up to 320°C with Borosilicate glass Transparent (with mica protection)	
Pressure:	≤25	bar(g)

Materials:

Frame:	1.4571, 1.4404
Glass:	Borosilicate glass (acc. or similar) DIN 7081 Reflex- or Transparent glass
Gasket: ¹	PTFE; FKM; NBR; C4400; Silicone; EPDM; Graphite
Screws:	A4-70
Special materials on request ¹ see INFO gaskets-leaflet	

INSTALLATION NOTE:

After welding in the base frame, check whether the sealing surface has warped. If necessary, it must be reworked! Also observe the specified torques for the screw connection, according to the operating and maintenance instructions!

The operating pressure does not apply to the base flange, this must be verified together with the pressure vessel according to AD 2000 instruction leaflet B9 or equivalent code!

REFLEX AND TRANSPARENT GLASS:

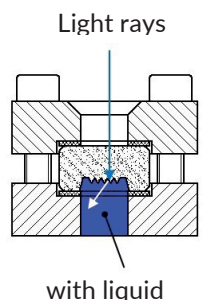
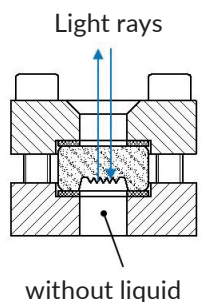
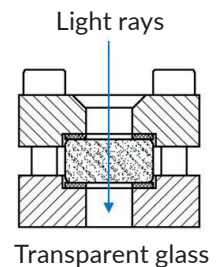
In the case of dark media, dark or non-illuminated vessels or a closed level indicator, the use of a reflex sight glass is recommended (see adjacent picture).

Due to the refraction of light in the incorporated prisms, the level can be seen better. However, if the vessel is illuminated, the medium is very clear or if the color of the medium should be visible, a transparent glass should be used.

Reflex glass cannot be protected with mica glass, as this will prevent reflection.

We will be happy to help you select the appropriate design.

Oval design



PRODUCTCODE:

Group	TYPE	ovr. length	Base frame*	Glass	Gasket	Variant
11	337	176 226 256 316 376 436 496 536	2: 1.4571 4: 1.4404 8: Special	1: Borosilicate glass (Boro) DIN 7081 Transparent glass 2: Borosilicate glass DIN 7081 Transparent glass + mica protection 3: Borosilicate glass DIN 7081 Reflex glass 5: Borosilicate glass unhardened Transparent glass	1: PTFE 2: FKM 3: NBR 4: C4400 5: Silicone 6: EPDM 7: Graphite 8: Special	Assigned by ACI if requi- red

INFO: Unless otherwise specified, the highlighted factory standard is supplied.

*Cover frame according to quotation / order confirmation.

ACCESSORIES / OPTIONS:

- a) High temperature design on request
- b) Mica protection (up to 320°C with Borosilicate glass DIN 7081 or similar)
- c) Vacuum design with O-ring on request
- d) Spezial sizes on request
- e) Other options on request

BL [mm]	176	226	256	316	376	436	496	536
SL [mm]	124	174	204	264	324	384	444	484
Weight [kg]	3,3	4,3	4,9	6,0	7,1	8,3	9,4	10,2

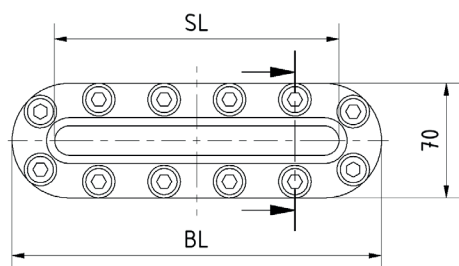
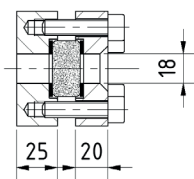


Illustration shows
transparent glass



EXAMPLE:

11-337-256-2-1-4-1-0 equivalent to:

ACI Type 337

256 mm long

Base frame made of 1.4571

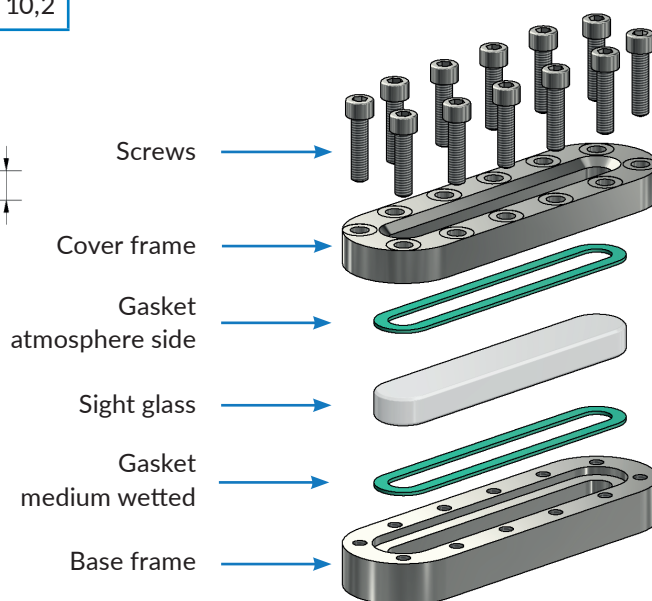
Cover frame made of 1.4571

Borosilicate glass Transparent, DIN 7081

Gasket C4400

Standard design

- additional accessories optional



RECOMMENDATION:

For aggressive media or steam, mica discs should be used to protect the glasses.
(Not possible for reflex glasses, as this would cause them to lose their function).