



APPLICATION:

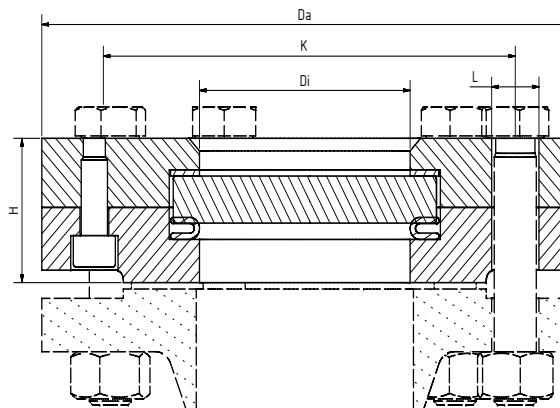
Round sight glass fittings are used for observation and illumination of the interior of closed vessels (boilers, tanks, silos, etc.). Sight glass fittings type 321A are round flange fittings compatible with ANSI flanges from class 150, each completed with a sight glass plate inserted between the gaskets and screwed firmly. Sealing is provided by a flexible gasket, with **metal to metal contact type flanged joint** ensuring the necessary compression.

INSTALLATION NOTE:

Gaskets matching the gasket surfaces should be used. The screw material should be of equal or higher quality than the sight glass flanges. Always use screws that are suitable according to the applicable standards. If possible, the screw thread and the screw head should be provided with screw lubrication.

Similar to DIN 28120

Operating conditions:	
Temperature: (depending on glass and gasket)	up to 200 °C ¹ with Borosilicate glass according to DIN 7080
Pressure:	≤20 bar(g)
¹ limited by gasket	



Materials:	
Flange:	1.4571; 1.4541; 1.4404; 1.4301/7
Glass:	Borosilicate glass DIN 7080
Gasket: ²	PTFE enclosed resilient gasket
Screws:	A4-80
Special materials on request ² see INFO gaskets-leaflet	

NPS	2"	3"	4"	5"	6"	8"
Di [mm]	65	80	100	125	125	150
H [mm]	41	50	59	66	66	66
Da	according to ASME B 16.5					
L						
K						
Wt. [kg]	3,8	8	13,5	17,4	23	36,7

PRODUCTCODE:

Group	TYPE	CLASS*	NPS	Base flange*	Glass	Gasket	Variant
11	321A	1: 150	1: 2" 2: 3" 3: 4" 4: 5" 5: 6" 6: 8"	1: 1.4571 2: 1.4541 3: 1.4404 5: 1.4301/7 10: Special	1: Borosilicate glass (Boro) DIN 7080 2: Soda lime glass (SLG) DIN 8902 4: Boro DIN 7080 + PTFE - wiper SGW 5: Boro DIN 7080 + Silicone - wiper SGW 6: SLG DIN 8902 + PTFE - wiper SGW 7: SLG DIN 8902 + Silicone - wiper SGW	1: PTFE	Assigned by ACI if required

INFO: Unless otherwise stated, the factory standard highlighted is supplied.*Class only referred to the bolt hole circle. Pressure max. 20 bar! For higher working pressures see high pressure version Type 322A.

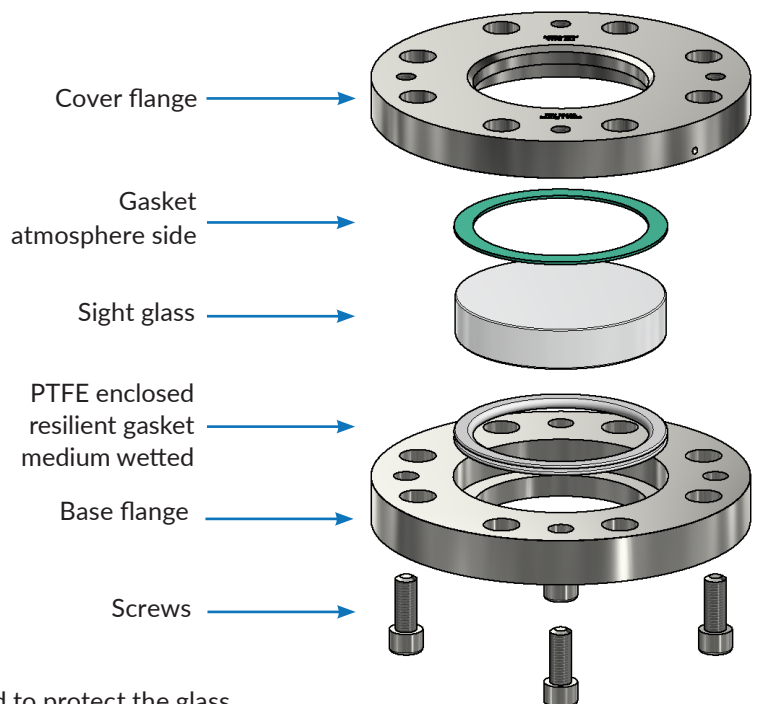
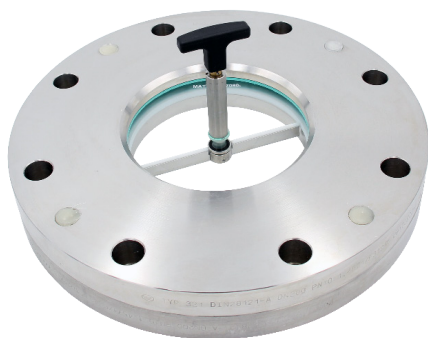
SPECIAL DESIGNS/OPTIONS:

- a) Wiper SGW with PTFE or silicone wiper blade
- b) Spray device SVII
- c) LED lights, for EX and Non-EX areas
- d) FEP protectiv screen (for higher pH-values)
- e) Mica protection

EXAMPLE:

11-321A-1-4-1-1-1-0 equivalent to:

ACI Type 321A
CLASS 150
NPS 5"
Base flange made of 1.4571
Cover flange made of 1.4571
Borosilicate glass DIN 7080
PTFE enclosed resilient gasket
Standard version



RECOMMENDATION:

For aggressive media or steam, mica discs should be used to protect the glass.