



APPLICATION:

For observing filling and flow in pipes. The sight glass enables reliable monitoring of the function and performance of individual apparatus as well as entire systems. Type 522 high-pressure sight glasses can be screwed directly into pipelines. BSP and NPT threads are available as connections.

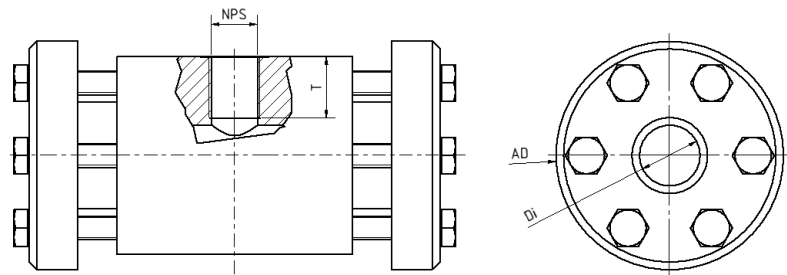
INSTALLATION NOTE:

In order to achieve the specified pressure rating, the threaded connection must be sealed with suitable material. The threads are not self-sealing!

**With female thread
BSP or NPT
($\Delta P \leq 320$ bar)**

Operating conditions:

Temperature: (depending on glass and gasket)	280 °C 300 °C	
Pressure:	≤ 40 to 320^1	Bar
¹ higher if possible on request		



Materials:

Body:	1.4571; 1.4539; 1.4404
Glass:	Borosilicate glass DIN 7080 Mica
Gasket:	Graphite
Screws:	A4-70
Special materials on request	

NPS	1/4"	3/8"	1/2"	3/4"	1"	1 1/2"	2"
D1	25	25	25	35	40	40	50
T (G)	20	25	25	30	40	40	40
T (NPT)	10	10,3	13,6	14	16,8	17,3	17,7
AD	105	105	105	125	150	150	170
Special dimensions and other standards on request							

PRODUCTCODE:

Group	TYPE	Thread	NPS	PN	Body*	Glass	Gasket	Variant
11	522	1: BSP 2: NPT 3: Special	1: 1/4" 2: 3/8" 3: 1/2" 4: 3/4" 5: 1" 6: 1 1/2" 7: 2" 8: Special	1: 40 2: 63 3: 100 4: 160 5: 250** 6: 320** 8: Special	1: 1.4571 2: 1.4404 8: Specia	1: Borosilicate glass (Boro) DIN 7080 4: Boro + Mica 8: Special	7: Graphite 8: Special	Assigned by ACI if required

INFO: Unless otherwise stated, the highlighted factory standard is supplied.

* Cover flanges made of body material or according to quotation / order confirmation

** Only with borosilicateglass and mica protection

SPECIAL DESIGNS/OPTIONS:

- a) Double glazing
- b) Mica protection
- c) FEP protective screen
- d) LED or halogen lights, ATEX-certified, EX
- e) Additional options on request

EXAMPLE:

11-522-1-5-4-1-1-7-0 equals the product code:

ACI Type 522

Thread BSP

NPS 1"

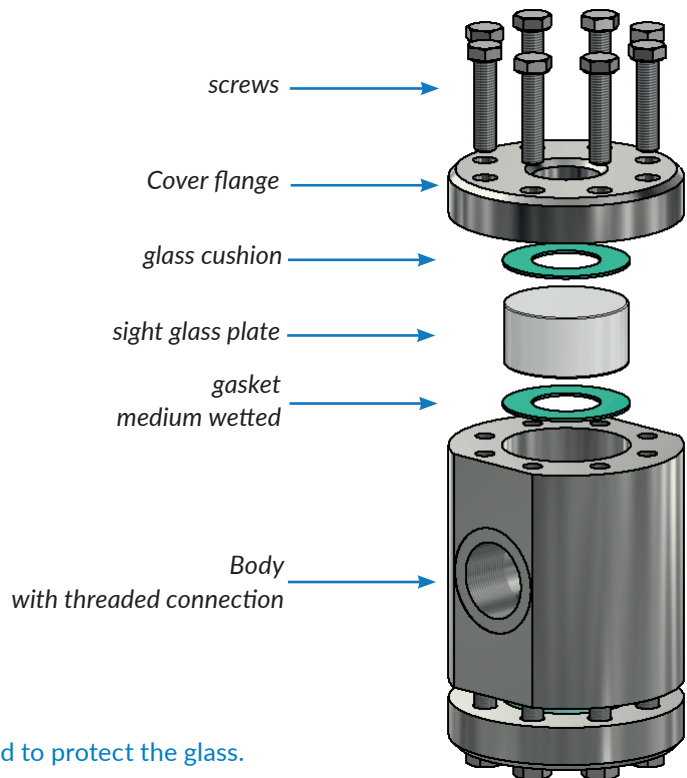
PN160

body 1.4571

borosilicate glass

gasket graphite

standard version



RECOMMENDATION:

For aggressive media or steam, mica discs should be used to protect the glass.