



Rectangular Sight Glass

Level indicator

With welding ends

Type 410

Application:

For Liquid Level display, visual checkup and observation on vessels, boilers and silos at pressures up to 35 bar and high temperatures.

The connections sockets with $\varnothing 20$ mm are mounted to the body ends. Other diameters available on request.

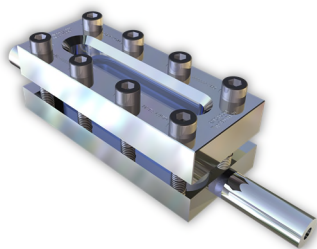
Operating Pressure:
Up to 35 bar

Operating conditions:

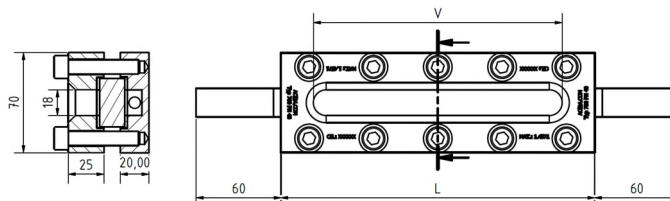
Temperature:	243	°C
Pressure:	16	Bar
	35	Bar

Materials:

Flange:	1.4571 S235GH
Glass:	Borosilicate glass DIN 7081 (Reflex or Transparent)
Seal:	PTFE (200°C) FKM (200°C) NBR (100°C) C4400 (150°C) Silicone (200°C) EPDM (140°C) Graphite (280°C)



Other materials on request



BL	SL	Blocked View	Kg (16 bar)	Kg (35 bar)	Tightening Torque (Nm)
140	79	0	2,8	3,4	13...34
170	124	0	3,2	4,0	13...34
220	174	0	4,0	5,0	13...34
250	204	0	4,6	5,7	13...34
300	264	0	5,3	6,7	13...34
310	264	0	5,6	7,0	13...34
350	304	0	6,3	7,8	13...34
370	324	0	6,6	8,2	13...34
400	354	0	7,1	8,9	13...34
500	454	1x46	9,1	11,4	13...34
600	564	1x46	10,7	13,4	13...34
620	574	1x46	11,1	13,9	13...34
700	654	1x46	12,5	15,7	13...34
740	694	1x46	13,2	16,5	13...34
800	754	1x46	14,2	17,8	13...34
930	884	2x46	16,7	20,9	13...34
1000	954	3x46	18,2	22,8	13...34



Installation guideline:

After welding of the base flange, the sealing surface must be checked for deformations! Reworking may be required!



Rectangular Sight Glass

Level indicator

With welding ends

Type 410

Product Code:

		Inst. Length	PN	Flange	Glass	Seal	Variants
11	410	Acc. To Table	1: 16 2: 35	1: S235JRG 2: 1.4571 3: Base flange VA, Cover flange St. 4: Base flange St., Cover flange VA 5: Duplex	1: BS Transparent 3: BS Reflex	1: PTFE 2: FKM 3: NBR 4: C4400 5: Silicone 6: EPDM 7: Graphite 8: Special	Assigned by ACI as required

ACI Type 410

220 mm

PN16

Example:

Flange 1.4571

11-410-16-220-2-1-1-000

Borosilicate glass transparent

Seal PTFE

Standard construction

Recommendation:

For aggressive media or steam we recommend adding a mica disk to protect the glass.

Technical changes and errors reserved!

ACI Industriearmaturen GmbH
www.aci24.com • info@aci24.com
Version 2018-05-17