



Rectangular Sight Glass

Level Indicator

With welding ends on the back

Type 411

Application:

For Liquid Level display, visual checkup and observation on vessels, boilers and silos at pressures up to 35 bar and high temperatures.

The connections sockets with $\varnothing 20 \times 2,6$ mm are mounted on the back side of the sight glass. Other diameters available on request.

Operating pressure:
Up to 35 bar

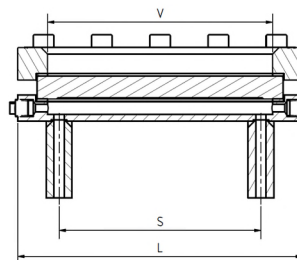
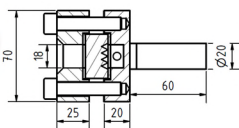
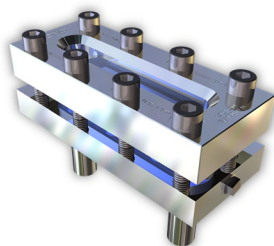
Operating conditions:

Temperature:	243	°C
Pressure:	16	Bar
	35	Bar

Materials:

Flange:	1.4571
Glass:	Borosilicate glass DIN 7081 (Reflex or Transparent)
Seal:	PTFE (200°C) FKM (200°C) NBR (100°C) C4400 (150°C) Silicone (200°C) EPDM (140°C) Graphite (280°C)

Other materials on request



BL	SL	Blocked View	Kg (16 bar)	Kg (35 bar)	Tightening Torque (Nm)
140	79	0	2,8	3,4	13...34
170	124	0	3,2	4,0	13...34
220	174	0	4,0	5,0	13...34
250	204	0	4,6	5,7	13...34
300	264	0	5,3	6,7	13...34
310	264	0	5,6	7,0	13...34
350	304	0	6,3	7,8	13...34
370	324	0	6,6	8,2	13...34
400	354	0	7,1	8,9	13...34
500	454	1x46	9,1	11,4	13...34
600	564	1x46	10,7	13,4	13...34
620	574	1x46	11,1	13,9	13...34
700	654	1x46	12,5	15,7	13...34
740	694	1x46	13,2	16,5	13...34
800	754	1x46	14,2	17,8	13...34
930	884	2x46	16,7	20,9	13...34
1000	954	3x46	18,2	22,8	13...34



Installation guideline:

After welding of the base flange, the sealing surface must be checked for deformations! Reworking may be required!

Technical changes and errors reserved!

ACI Industriearmaturen GmbH
www.aci24.com • info@aci24.com
Version 2018-05-17



Rectangular Sight Glass

Level Indicator

With welding ends on the back

Type 411

Product Code:

		Inst. length	PN	Flange	Glass	Seal	Variants
11	411	Acc. To table	1: 16 2: 35	1: S235JRG 2: 1.4571 3: Base flange VA, Cover flange St. 4: Base flange St., Cover flange VA 5: Duplex	1: BS Transparent 3: BS Reflex	1: PTFE 2: FKM 3: NBR 4: C4400 5: Silicone 6: EPDM 7: Graphite 8: Special	Assigned by ACI as required

ACI Typ 411

220 mm

PN16

Example:

Flansch 1.4571

11-411-1-220-2-1-1-00

Borosilicate glass transparent

Seal PTFE

Standard construction

Recommendation:

For corrosive media or steam, we recommend adding a mica disk
to protect the glass!

Technical changes and errors reserved!

ACI Industriearmaturen GmbH
www.aci24.com • info@aci24.com

Version 2018-05-17