



# High pressure sight glass PN 40 to PN 400

Flow sight glass with female thread

# Type 522



### APPLICATION:

For observation of filling and flow in pipelines. This sight glass allows reliable monitoring of the function and performance of individual equipment as well as entire installations.

Type 522 Flow sight glasses are designed to be screwed directly into pipelines. Inch threads **BSP** and **NPT** are available for selection.

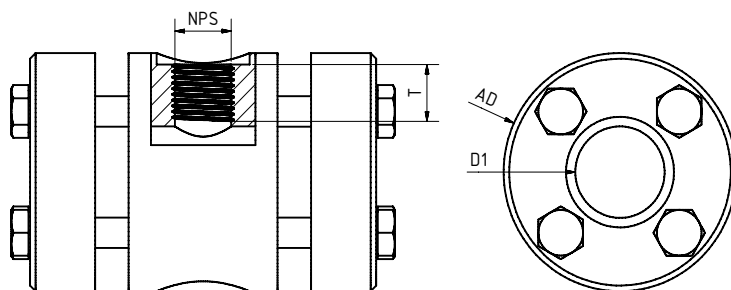
### INSTALLATION NOTE:

In order to achieve the specified pressure rating, the threaded connection must be sealed with suitable material. Threads are not self-sealing!

**With female thread  
BSP or NPT  
( $\Delta P \leq 400$  bar)**

### Operating conditions:

Temperature: (depending on glass and gasket)	150 °C 280 °C 300 °C	
Pressure:	$\leq 40$ to $400^1$	Bar
<sup>1</sup> higher if possible on request		



### Materials:

Body:	1.4571; 1.4539; 1.4404
Glass:	Borosilicate glass DIN 7080 Quartz glass Mica META® glass Sapphire glass
Gasket:	Graphite
Screws:	A4-70
Special materials on request	

NPS	1/4"	3/8"	1/2"	3/4"	1"	1 1/2"	2"
D1	depending on pressure rating						
T (G)	20	20	20	20	25	25	25
T (NPT)	18	18	14	14	11,5	11,5	11,5
AD	depending on pressure rating						
Special dimensions and other standards on request							



# High pressure sight glass PN 40 to PN 400

Flow sight glass with female thread

# Type 522

## PRODUCTCODE:

Group	TYPE	Thread	NPS	PN	Body*	Glass	Gasket	Variant
11	522	1: BSP 2: NPT	1: 1/4" 2: 3/8" 3: 1/2" 4: 3/4" 5: 1" 6: 1 1/2" 7: 2" 8: Special	1: 40 2: 63 3: 100 4: 160 5: 250 6: 320 7: 400 8: Special	1: 1.4571 2: 1.4404 8: Special	1: Borosilicate glass (Boro) DIN 7080 2: Quartz glass 3: Sapphire glass 4: Boro + Mica 7: META® glass 8: Special	7: Graphite 8: Special	Assigned by ACI if required

**INFO:** Unless otherwise stated, the factory standard highlighted is supplied.

\* Cover flanges made of body material or according to quotation / order confirmation

## SPECIAL DESIGNS/OPTIONS:

- a) Double glazing
- b) Mica protection
- c) FEP protective screen
- d) LED or halogen lights, ATEX-certified, EX
- e) Additional options on request

## EXAMPLE:

**11-522-1-5-4-1-1-7-0** equals the product code:

ACI Type 522  
Thread BSP  
NPS 1"  
PN160  
body 1.4571  
borosilicate glass  
gasket graphite  
standard version

## RECOMMENDATION:

For aggressive media or steam, mica discs should be used to protect the glass.